

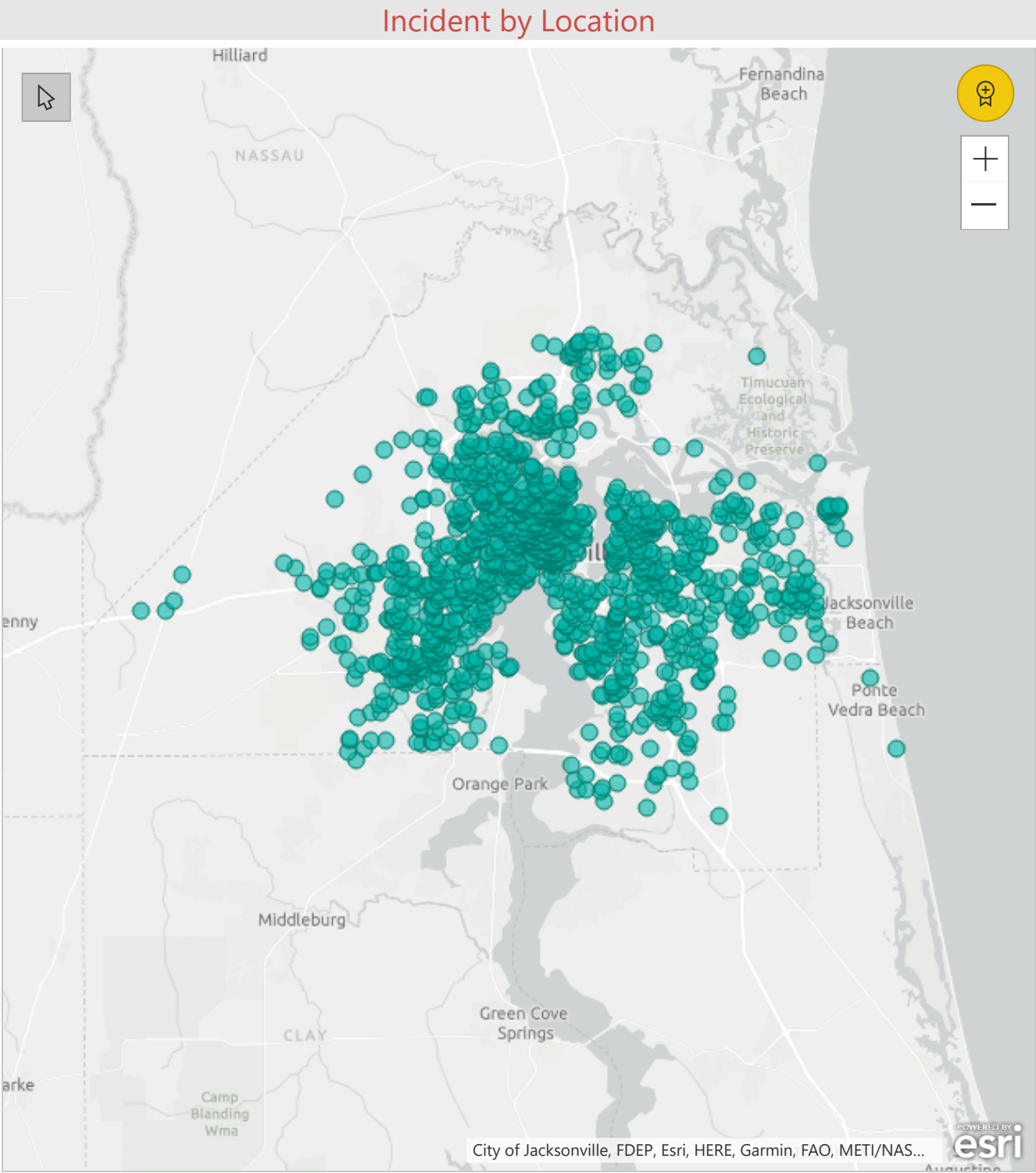
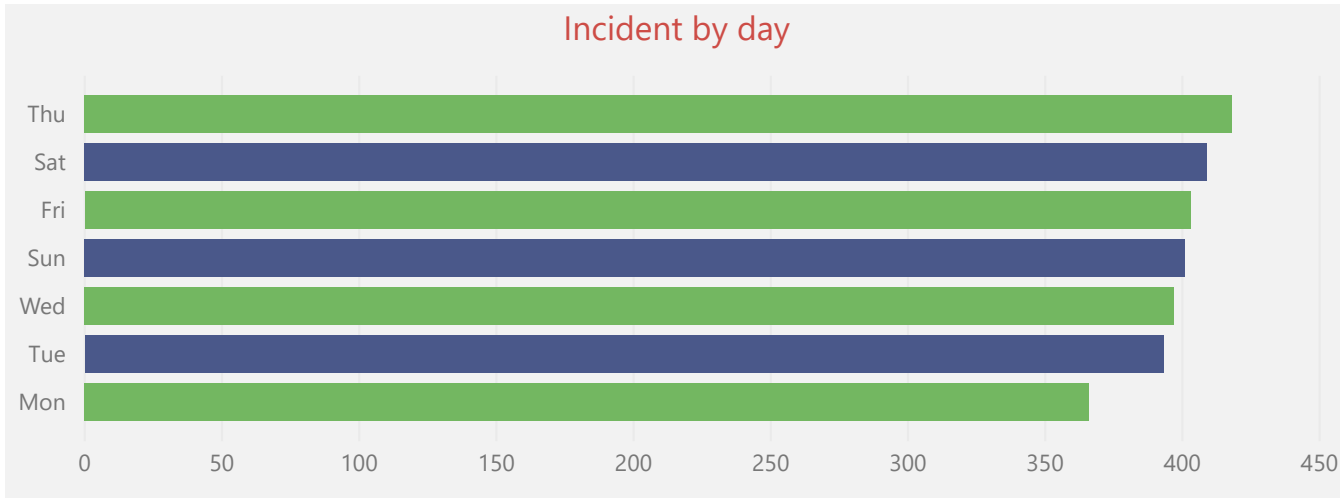
2787
Number of Incidents

85
Number of Offenses Types

Day of the week	Description1
Fri	AGGRAVATED BATTERY
Mon	ARMED ROBBERY
Sat	ARSON / ANY DWELLING OR ITS CONTENTS / OCCUPIED OR NOT
Sun	ARSON / ANY STRUCTURE OR ITS CONTENTS WHERE PERSONS ARE NORMALLY PRESENT
Thu	ASSAULT / AGG / WITH A DEADLY WEAPON WITHOUT INTENT TO KILL
Tue	ASSAULT / AGG / WITH INTENT TO COMMIT A FELONY
Wed	

Statistical Data for Incidents in January

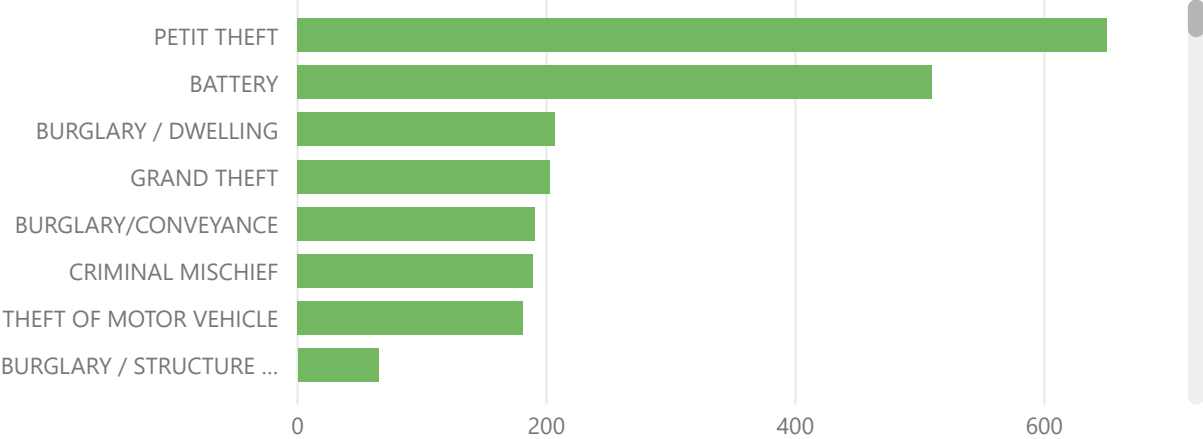
Day of the week	Count of Incident #	Day of the week	%GT Count of Incident #	Time	Count of Incident #
Thu	418	Thu	15.00%	12:00:00 PM	88
Sat	409	Sat	14.68%	6:00:00 PM	86
Fri	403	Fri	14.46%	5:00:00 PM	79
Sun	401	Sun	14.39%	9:00:00 PM	78
Wed	397	Wed	14.24%	12:00:00 AM	73
Tue	393	Tue	14.10%	7:00:00 PM	69
Mon	366	Mon	13.13%	3:00:00 PM	68
Total	2787	Total	100.00%	Total	2787



Incident

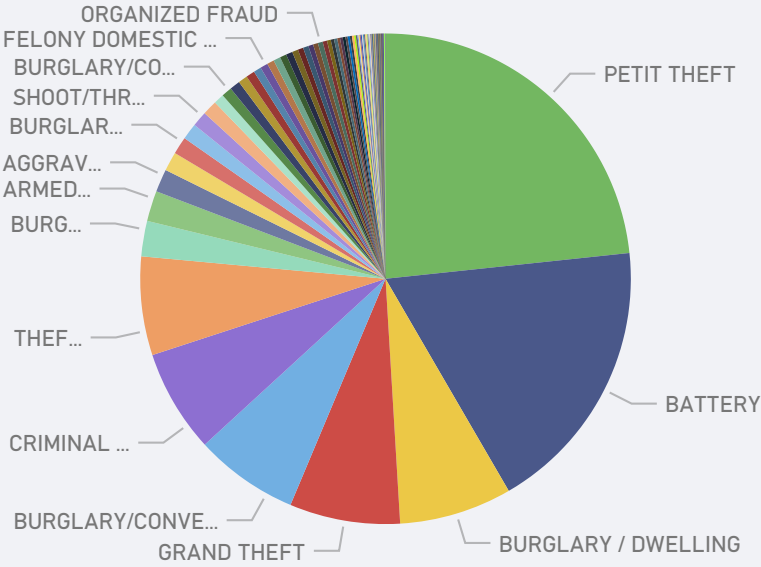
Description1	Count of Incident #
PETIT THEFT	650
BATTERY	510
BURGLARY / DWELLING	207
GRAND THEFT	203
BURGLARY/CONVEYANCE	191
CRIMINAL MISCHIEF	189
THEFT OF MOTOR VEHICLE	181
BURGLARY / STRUCTURE NOT OCCUPIED	65
ARMED ROBBERY	56
AGGRAVATED BATTERY	42
ASSAULT / AGG / WITH A DEADLY WEAPON WITHOUT INTENT TO KILL	35
Total	2787

Count of Incident # by Description1



First Description by Latitude and Longitude

Incident # by Description1



Incident # by Description1

